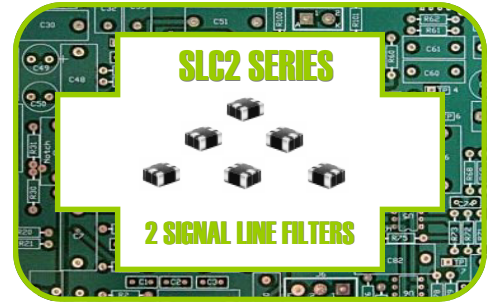


MOX-SLC2-1210

2 SIGNAL LINE COMMON MODE FILTERS



MoxiE
INDUCTOR CORPORATION



Features

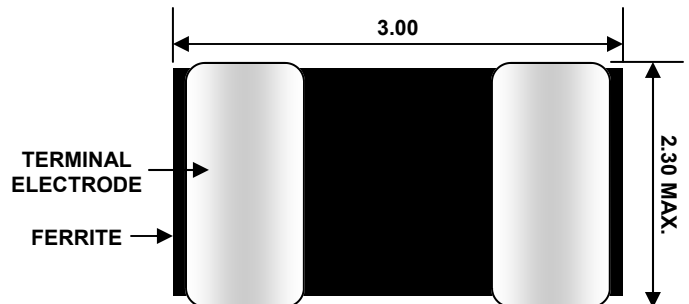
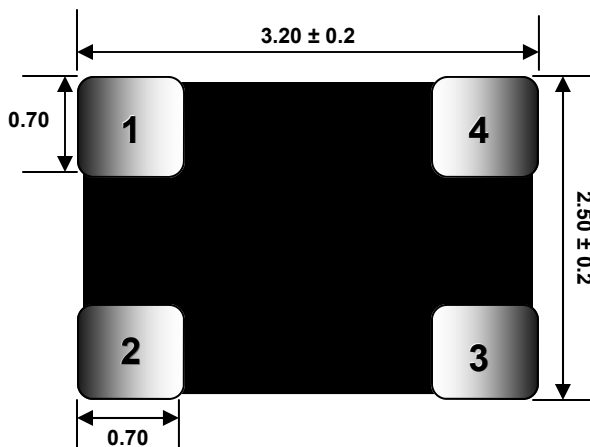
- RoHS Compliant.
- Low Cost.
- Custom Designs Available.
- Quick Turn Lead-times.
- Operating Temperature: -40°C $+^{\circ}105\text{C}$.
- Package available in 3 signal line to accommodate various designs.
- Excellent for noise suppression on any electronic device.
- Used to counter common-mode noise affecting signals within high speed lines.



NOTES



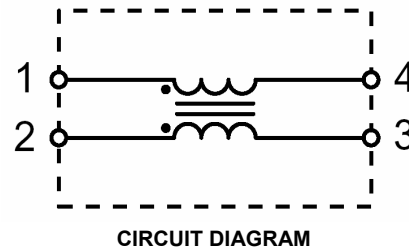
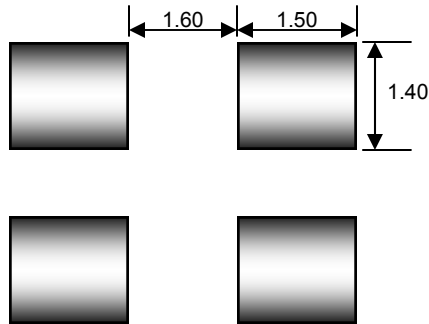
MECHANICAL DIMENSIONS



MOXIE NOTE: ALL DIMENSIONS IN MM.



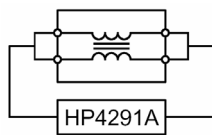
LANDING PATTERN & SCHEMATIC



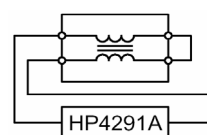
ELECTRICAL SPECIFICATIONS

MoxiE Part Number	Impedance (Ω) 100 MHz	DC Resistance (Ω Max.)	Rated Voltage Edc(V) Max.	Rated Current Idc (A) Max.	Insulation Resistance (Minimum)
MOX-SLC2-1210-800S-2P	80 \pm 25%	0.15	20	0.40	10M
MOX-SLC2-1210-161S-2P	160 \pm 25%	0.20	20	0.35	10M
MOX-SLC2-1210-271S-2P	270 \pm 25%	0.30	20	0.30	10M
MOX-SLC2-1210-601S-2P	600 \pm 25%	0.20	20	1.00	10M
MOX-SLC2-1210-102S-2P	1000 \pm 25%	0.50	20	0.20	10M

COMMON MODE



DIFFERENTIAL MODE



ENGINEERING NOTES

- All MoxiE electrical specifications are at 25°C
- Rated Current for a ΔT of 40°C
- RoHS Compliant.
- Packaging: Tape & Reel & Bulk. (1000 pieces per reel)
- MoxiE Inductor Corporation specifications are subject to change without notice.