

MOX-SLF-0907



SURFACE MOUNT LINE FILTER

MoxiE's MOX-SLF-0907 series of surface mount line filters are engineered with industry leading electrical isolation while providing ultra low resistance.

Features:

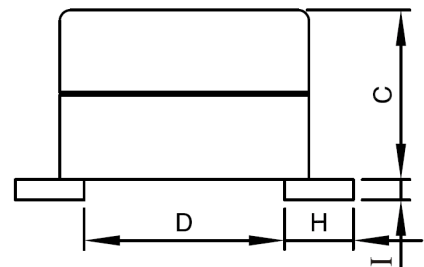
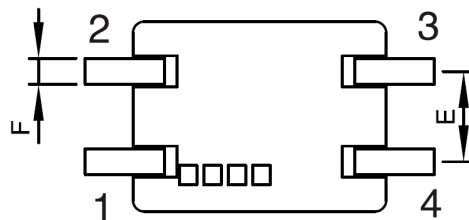
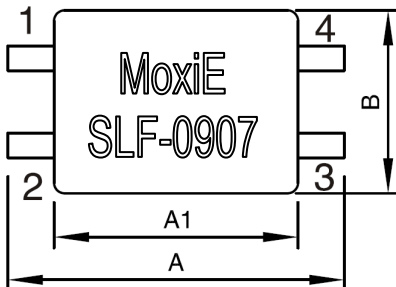
- Low cost.
- RoHS compliant.
- Wide frequency range over 1000MHz.
- MoxiE custom inductance values and tolerance available.



NOTES



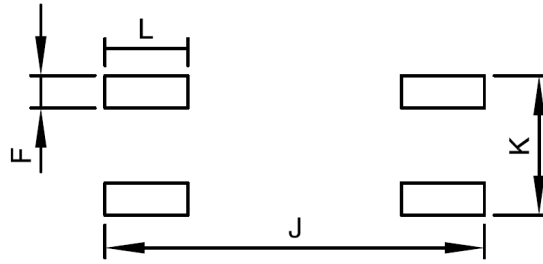
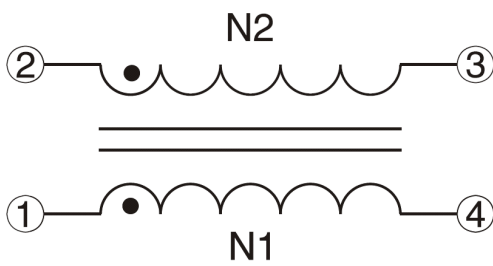
MECHANICAL DIMENSIONS



A1	A	B	C	D	E	F	H	I
9.20 ±0.3	7.10 TYP.	6.00 ±0.3	5.00 ±0.3	5.32 TYP.	2.49 TYP.	0.60 TYP.	1.92 TYP.	0.25 TYP.



LANDING PATTERN & SCHEMATIC



F	0.60 TYP.
J	9.50 REF.
K	3.40 REF.
L	2.20 REF.



ELECTRICAL SPECIFICATIONS

MoxiE Part Number	L (1-4) @ 100KHz, 0.1Vrms (μH)	DCR Winding (Ω Max.)	Rated Current (Max.)	Winding
MOX-SLF-0907-11	11.00 ± 25%	0.120	0.50 A	Bifilar
MOX-SLF-0907-25	25.00 ± 25%	0.200	0.50 A	Bifilar
MOX-SLF-0907-51	51.00 ± 25%	0.300	0.50 A	Bifilar
MOX-SLF-0907-470	470.00 ± 25%	0.280	0.50 A	Bifilar
MOX-SLF-0907-101	1000.00 ± 25%	0.400	0.50 A	Bifilar
MOX-SLF-0907-471	4700.00 ± 25%	0.700	0.20 A	Bifilar



ENGINEERING NOTES

- Temperature rise includes 30°C maximum at rated current.
- Resistance to solder heat: 260°C for 10 seconds.
- RoHS Compliant.
- Operating temperature: -40°C to +135°C.
- Storage temperature: -40°C to +135°C.
- Packaging: Tape & reel (1500 pieces per reel)
- MoxiE Inductor Corporation specifications are subject to change without notice.